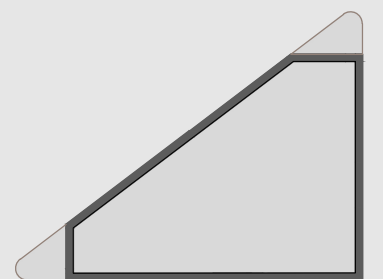
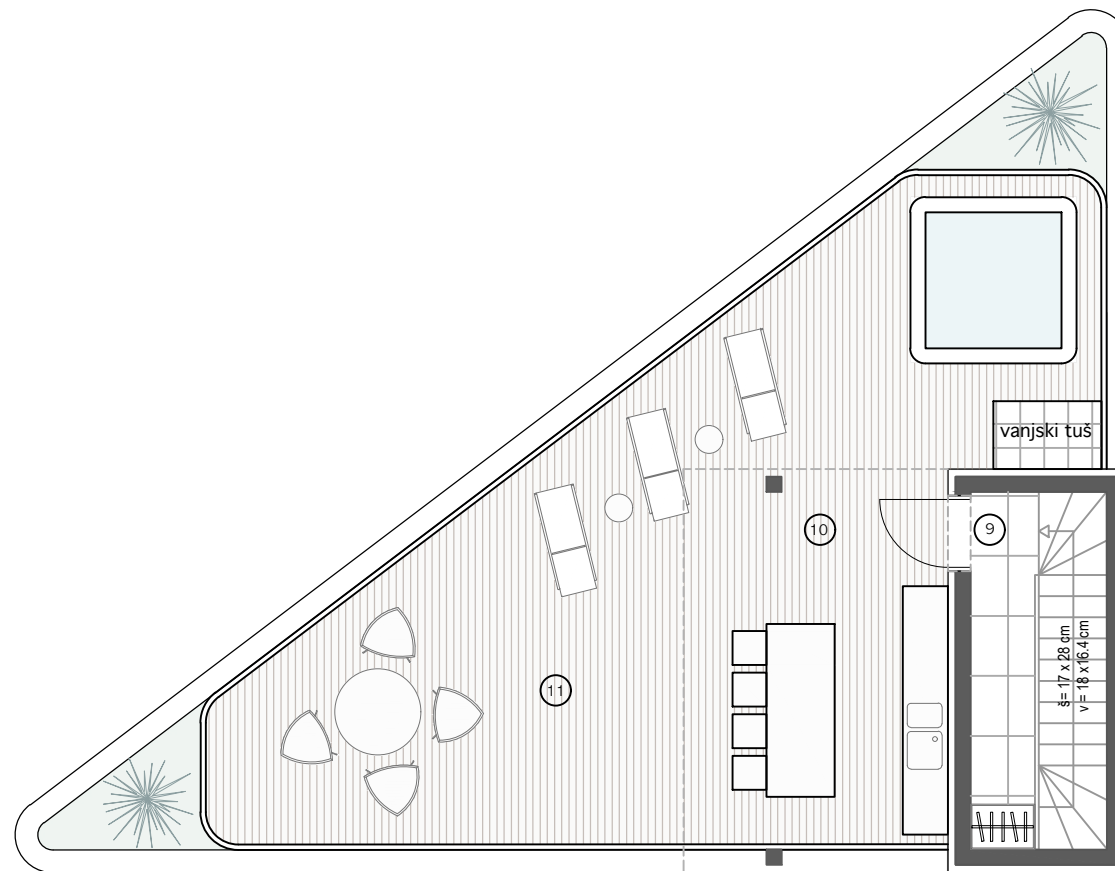
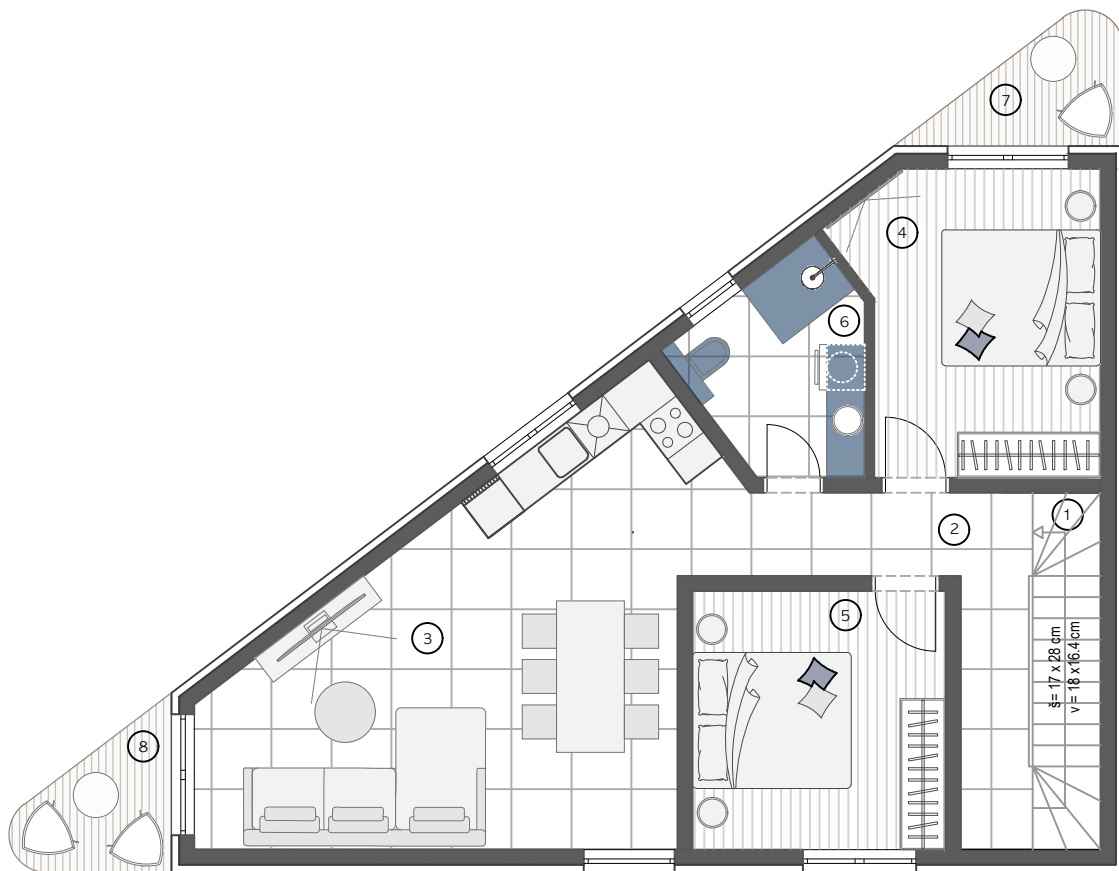


S4

1. STUBIŠTE 5,72m²
 2. HODNIK 7,43m²
 3. KUHINJA + DNEVNI BORAVAK + BLAGOVAONICA 29,27m²
 4. SPAVAĆA SOBA 1 12,69m²
 5. SPAVAĆA SOBA 2 11,46m²
 6. KUPAONICA 5,75m²
 7. NATKRIVENI BALKON 1
3,28m² x 0,50 = 1,64m²
 8. NATKRIVENI BALKON 2
3,29m² x 0,50 = 1,65m²
-
9. STUBIŠTE 8,52m²
 10. NATKRIVENA KROVNA TERASA
18,66m² x 0,50 = 9,33m²
 11. KROVNA TERASA
51,69m² x 0,25 = 12,92m²

UKUPNO: 106,38m²

2 x PARKIRNO MJESTO 25,00m²



2.KAT

